



---

30 January 2014

### **Tough choice for Livingstone Shire - Fish Habitat or Quarry?**

Conservationists, fishers and local residents are alarmed at the proposal to quarry hard rock and clay right beside Cawarral Creek (Coorooman) Fish Habitat Area.<sup>1</sup> Livingstone Shire's commitment to protecting coastal habitats within the Great Barrier Reef World Heritage Area<sup>2</sup> will be put to the test after February 4 when the comment period for quarry closes.

Capricorn Conservation Council coordinator Michael McCabe said today, "A quarry right beside one of the best loved and productive fish habitat areas on the Capricorn Coast imposes numerous environmental hazards."

"The best engineering design and operational practices cannot guarantee that rock dust, stockpile leachate, clay silt, diesel particulates won't end up in Coorooman Creek and Keppel Bay."

The Queensland Government *Cawarral Creek Declared Fish Habitat Area Central Queensland Assessment Report 2013*<sup>3</sup> states that, 'upstream waters provide valuable freshwater habitats for use by juveniles of a range of marine species such as barramundi, mangrove jack, mullet and tarpon.' and recommends extending the protected area noting that, 'intertidal saltmarshes and saltpans habitats have been found to have significant values for many species of fish, including those of economic importance such as bream, whiting and mullet.'

"Blasting, quarrying, and material transport all create the risk that toxic blast fumes, rock dust and fine clay silt run-off will contaminate these ecologically critical intertidal zones," Michael McCabe said.

"High winds as we are currently experiencing and rain events such as those we experienced from ex-cyclone Oswald will almost certainly overwhelm any dust suppression and sediment detention systems."

"The Great Barrier Reef Strategic Assessment draft indicates that the ecosystems and water quality of the Southern GBR and coastal zone are in steep decline and under the increasing pressure from urban expansion and industrial activities. Our Reef Guardian Councils need to stop projects which add to this decline."

"Everyone with an interest in protecting such iconic and environmentally important places is urged to contact the Livingstone Shire Council and make comments by Tuesday 4 February, 2014."

*ENDS:* Media contact: Michael McCabe 0459 261 653

*Attached:* Fish Habitat Area maps; Development Permit For Material Change of Use details

---

<sup>1</sup> <http://wetlandinfo.ehp.qld.gov.au/wetlands/facts-maps/fish-habitat-area-cawarral-creek/>

<sup>2</sup> GBR WHA Coastal Zone extends to 10 metres in height or 5 kilometres inland whichever is the furthest.

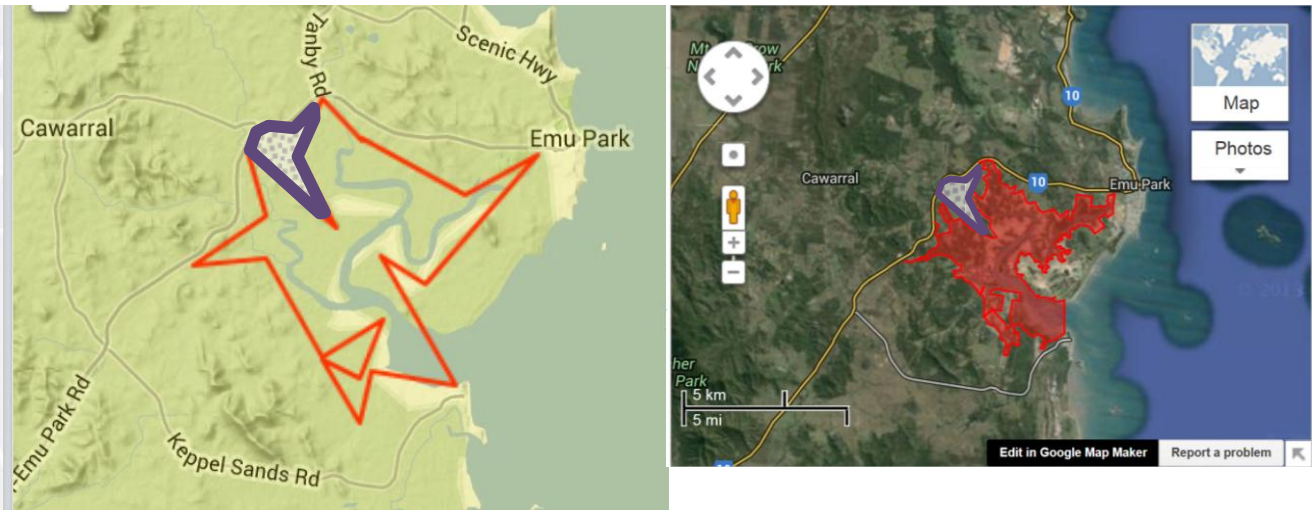
<sup>3</sup> <http://www.nprsr.qld.gov.au/managing/area-summaries/cawarral.html>

## Cawarral Creek fish habitat area: XXXXXXXXXX

Map Source: <http://wetlandinfo.ehp.qld.gov.au/wetlands/facts-maps/fish-habitat-area-cawarral-creek/>  
<https://maps.google.com.au/maps?q=http://wetlandinfo.ehp.qld.gov.au/resources/wetland-summary/kml/boundary/fish-habitat-area/fish-habitat-area-cawarral-creek.kmz>

## Coorooman Quarry (proposed): XXXXXXXXXX

2816 Emu Park Road Extractive Industry Site Plan – Barlow’s Earthmoving Pty Ltd (c/- [www.groundwork.com.au](http://www.groundwork.com.au) )



## Development Permit For Material Change of Use: D281-2013 (RRC)

**From:** Industrial Depot & Agriculture Purpose

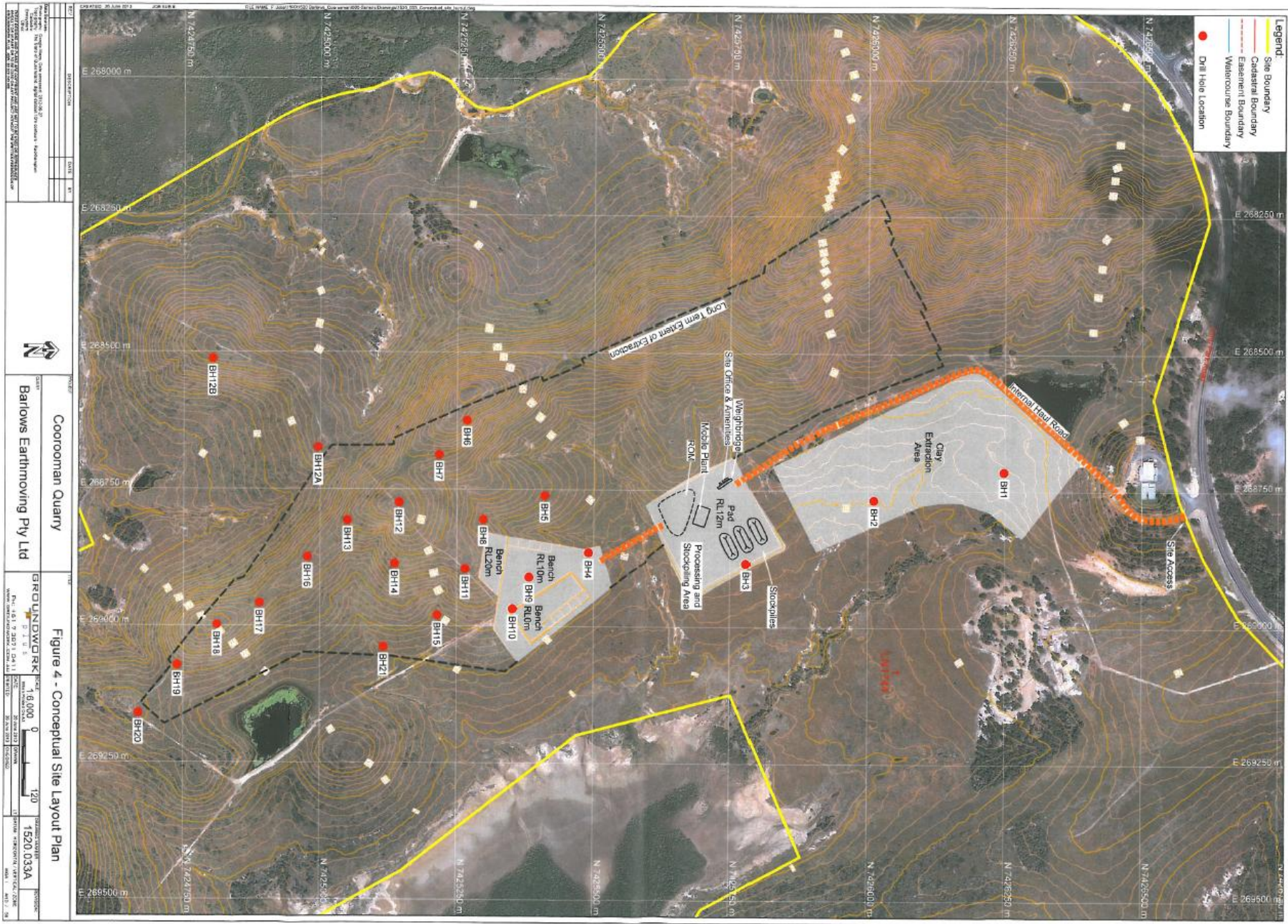
**To:** Extractive Industry & ERA Extractive and Screening activities (Hard Rock and Clay)

**Comment period:** 10 January 2014 to 4 February 2014 (Livingstone Shire Council)

**Source:** *The Bulletin*, Thursday, January 10, 2014, p.30

## Coorooman Quarry – Barlows Earthmoving Pty Ltd – Conceptual Site Layout Plan





PROJECT	COOROOMAN QUARRY
CLIENT	Barlows Earthmoving Pty Ltd
DATE	15/02/2024
SCALE	1:500
PROJECT NO.	1520 033A
ISSUE NO.	01
ISSUE DATE	15/02/2024
ISSUE DESCRIPTION	CONCEPTUAL SITE LAYOUT PLAN
DESIGNED BY	CCCLD
CHECKED BY	CCCLD
APPROVED BY	CCCLD
DATE	15/02/2024

**Figure 4 - Conceptual Site Layout Plan**

**GROUNDWORK**  
 Scale: 1:500  
 Grid: 10m  
 Contour Interval: 1m  
 Elevation: 1520 033A  
 Date: 15/02/2024